

**Solar Protection
Solar Chimney**

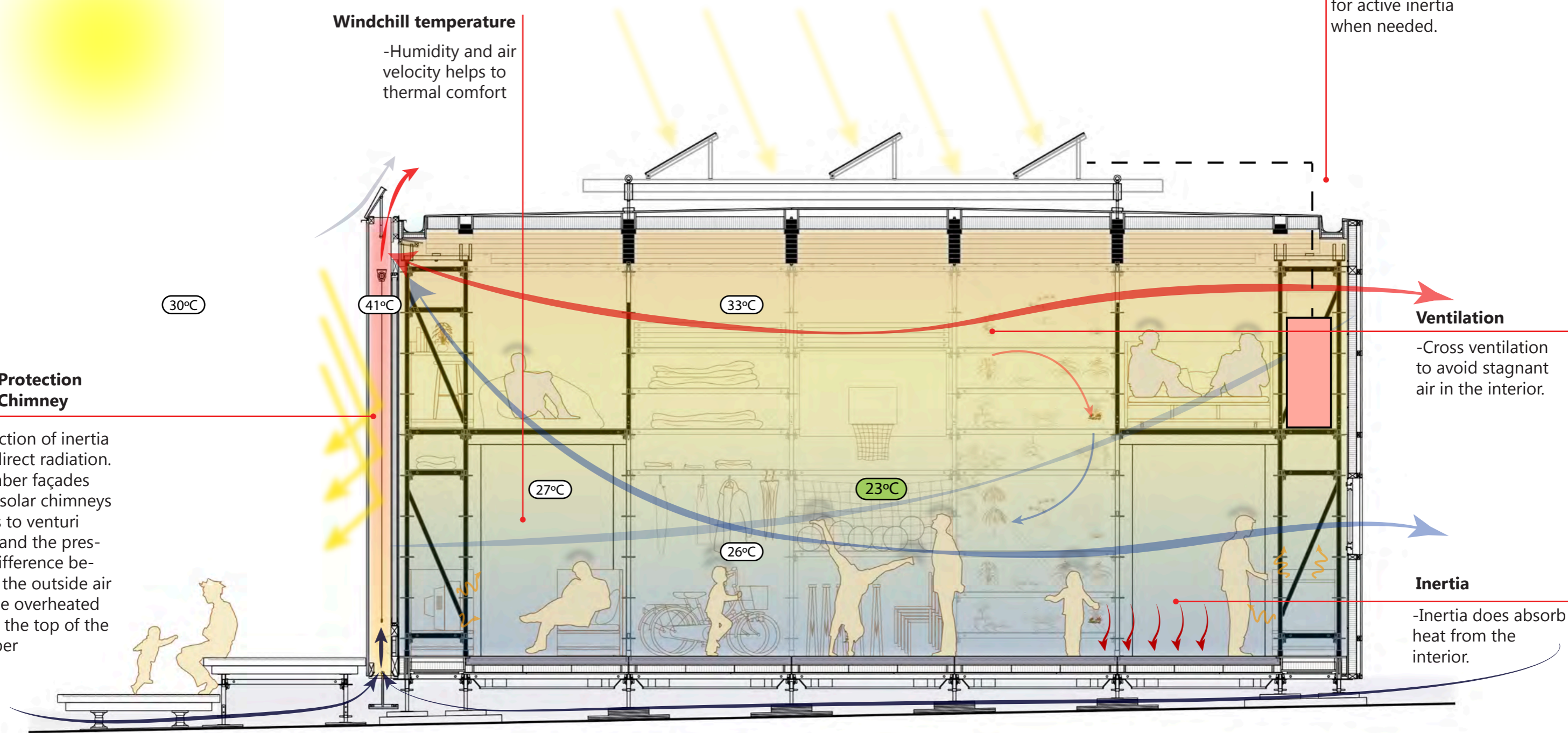
-Protection of inertia from direct radiation.
-Chamber façades act as solar chimneys thanks to venturi effect and the pressure difference between the outside air and the overheated one at the top of the chamber

Windchill temperature
-Humidity and air velocity helps to thermal comfort

Storage
-Storing water for active inertia when needed.

Ventilation
-Cross ventilation to avoid stagnant air in the interior.

Inertia
-Inertia does absorb heat from the interior.



Case A
Day with radiation > 0.4 KW/m2
Summer day

Description
Bioclimatic drawings

Drawing number
BA-011

reosò
www.reso.upc.edu

UPC A Solar Decathlon Europe Page 30